

# Powerpack 2000R

Keeping you powered wherever you are



Portable  
Power  
Technology

Compact all in one Powerpack 2000R delivers AC and DC power wherever and whenever you need it

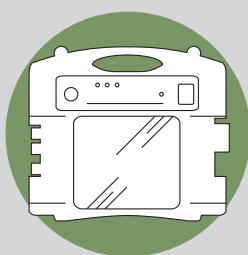
Perfect for  
off grid, industrial  
and commercial  
applications

## Features:

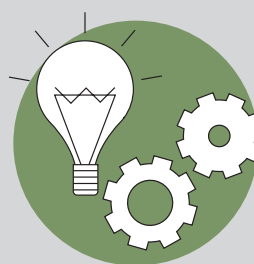
- Portable, clean and powerful lithium-ion battery provides 1885 Watt Hour (Wh) of battery capacity
- Ultra stable 2000W continuous pure sinewave 230v inverter output with single UK socket
- UPS function provides automatic transfer of load to battery without interruption during a power cut
- Strong aluminium alloy rugged design – weighs just 22Kg
- Safe and easy to use integrated charger and external charger for fast charging
- Intelligent LCD control panel displays battery percentage, remaining runtime and differential power status
- Built in multi safety protection – 5 levels that include short circuit, overload and over-temperature



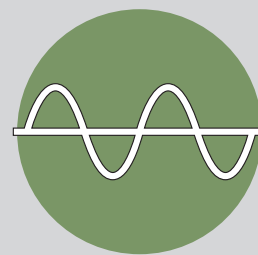
Ideal for off grid and  
remote location



All in one  
power solution



Innovative  
Design



Pure  
Sinewave

## Other Specifications:

<b>Input Voltage (AC)</b>	230V
<b>Input Charging Current</b>	5A built in charger/ 9A external charger
<b>Typical Charging Time</b>	5-7 hours (fast charging)
<b>Output Voltage (Inverter)</b>	230V 50Hz pure sinewave
<b>Output Power (Inverter)</b>	2000W continuous
<b>DC Input/Output Connector</b>	29.4 Volt @ 20 amps

<b>USB Output</b>	2 x 5V @ 2.1 amps
<b>Dimensions</b>	410 x 250 x 270mm (L x D x H)
<b>Battery Capacity</b>	25.9V @ 72.8 Ah (1885 Watt Hour)
<b>Weight</b>	22Kg
<b>Operating temp range</b>	-20°C to +60°C
<b>Warranty</b>	1 year
<b>Certifications</b>	CE, EMC, UN38.3/MSDS, IEC62133