

Powerpack 2000R

Keeping you powered wherever you are



Portable
Power
Technology

Compact all in one Powerpack 2000R delivers AC and DC power wherever and whenever you need it

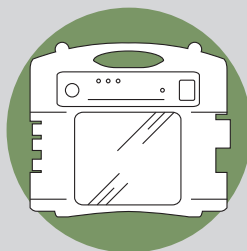
Perfect for
off grid, industrial
and commercial
applications

Features:

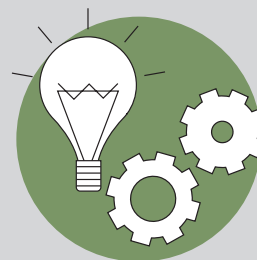
- Portable, clean and powerful lithium-ion battery provides 1885 Watt Hour (Wh) of battery capacity
- Ultra stable 2000w continuous pure sinewave 230v inverter output with dual UK sockets
- UPS function provides automatic transfer of load to battery without interruption during a power cut
- Strong aluminium alloy rugged design – weighs just 22Kg
- Safe and easy to use integrated charger and external charger for fast charging
- Intelligent LCD control panel displays battery percentage, remaining runtime and differential power status
- Built in multi safety protection – 5 levels that include short circuit, overload and over-temperature



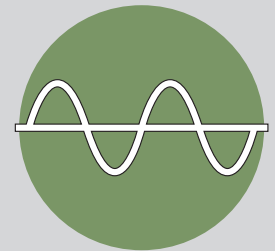
Ideal for off grid and remote location



All in one power solution



Innovative Design



Pure Sinewave

Other Specifications:

Input Voltage (AC)	230V	USB Output	2 x 5V @ 2.1 amps
Input Charging Current	5A built in charger/ 9A external charger	Dimensions	410 x 250 x 270mm (L x D x H)
Typical Charging Time	5-7 hours (fast charging)	Battery Capacity	25.9V @ 72.8 Ah (1885 Watt Hour)
Output Voltage (Inverter)	230V 50Hz pure sinewave	Weight	22Kg
Output Power (Inverter)	2000W continuous	Operating temp range	-20 deg c to +60 deg c
DC Input/Output Connector	29.4 Volt @ 20 amps	Warranty	1 year
		Certifications	CE, EMC, UN38.3/MSDS, IEC62133